

# HORIZON

# SUITES

*Modern Living Spaces for Digital Nomads*



This presentation is the property of Horizon L&L Sdn. Bhd and is strictly confidential. It contains information intended only for the person to whom it is transmitted. With receipt of this information, recipient acknowledges and agrees that all of the information herein will be treated as confidential material with no less care than that afforded to its own confidential material. This presentation is for informational.



# HORIZON SUITES

Salak Tinggi ERL Station

Xiamen University

Proposed Korean Mall

Future Development

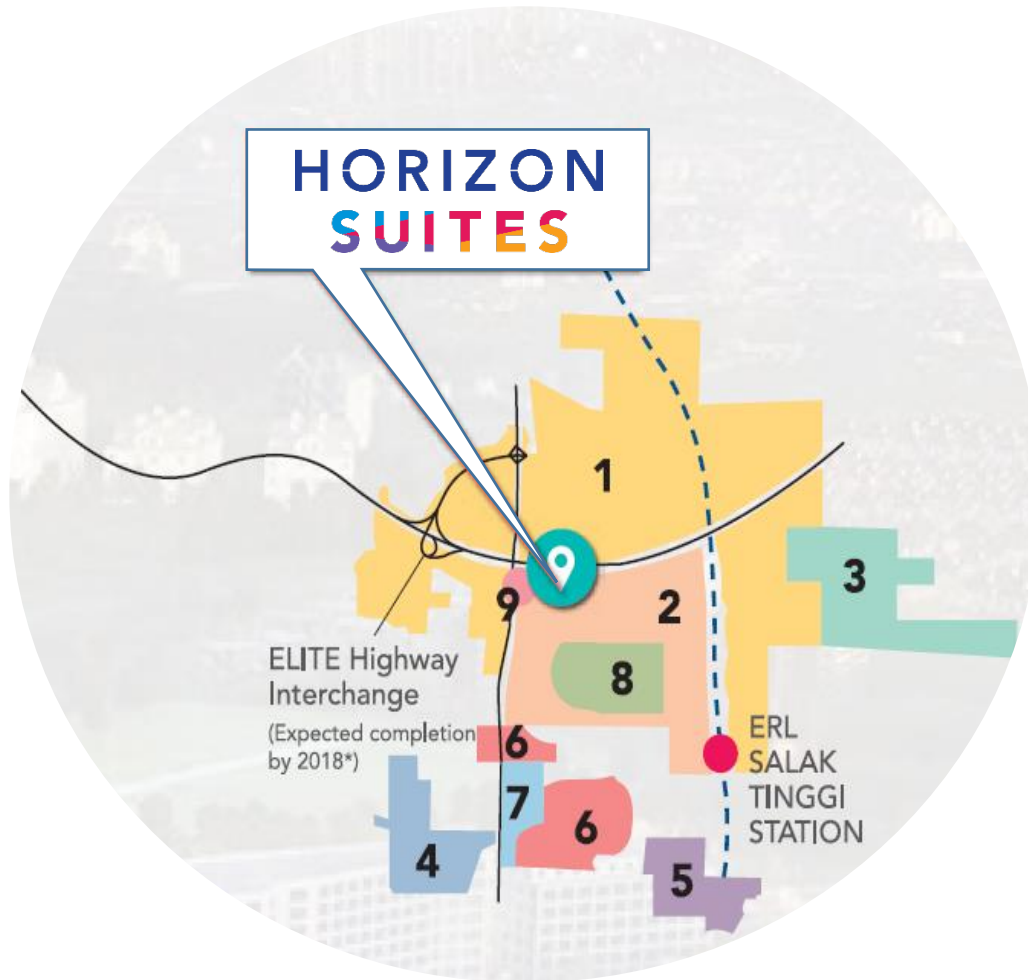
ELITE Highway

10km To Putrajaya

10km To KLIA



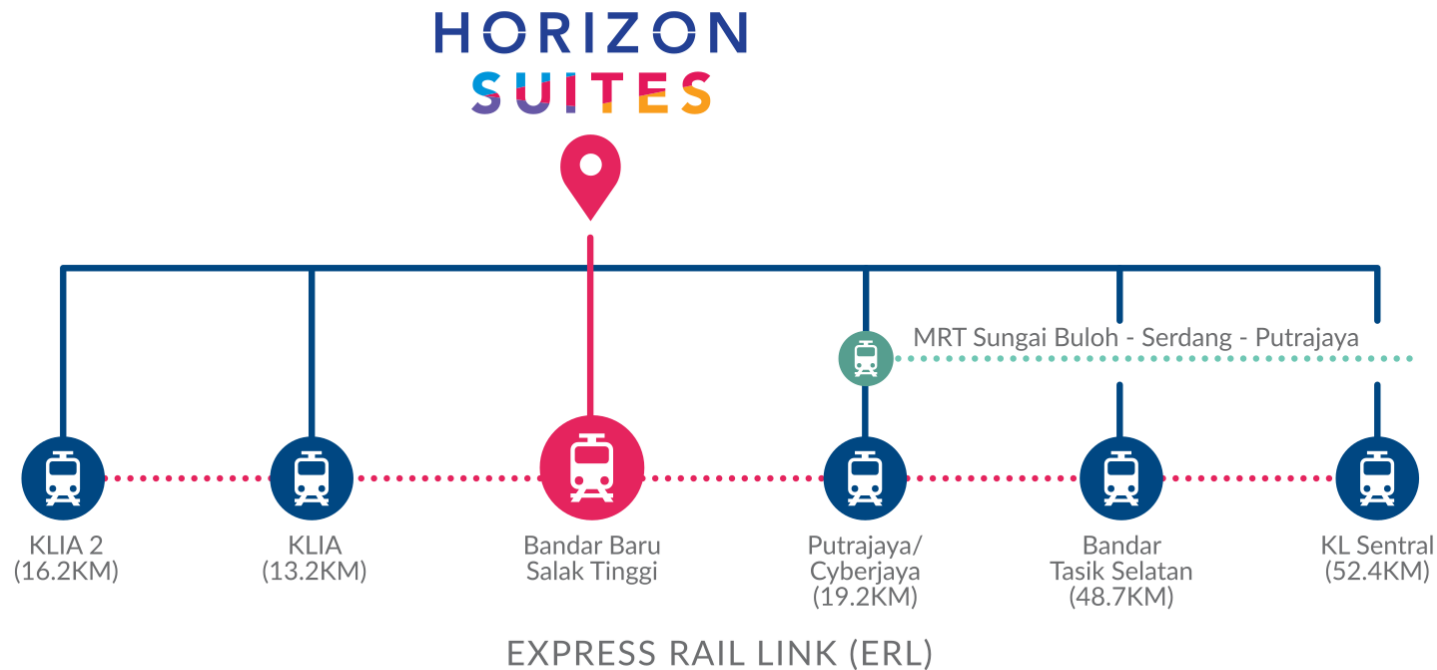
# Neighbouring Developments



1. **Sime Darby** – Serenia City (1,775 acres)
2. **Sunsuria** – Sunsuria City (525 acres)
3. **Paramount Properties** – Greenwoods (237 acres)
4. **Glomac** - Saujana KLIA (239 acres)
5. **SP Setia** – Setia Warisan Tropika – (139 acres)
6. **IOI** – Warisan Puteri (206 acres)
7. **KIP** – KIP Sentral (37 acres)
8. **Xiamen University** – 150 acres
9. **Future Development** – 22 acres



# ERL Line (KL-KLIA)

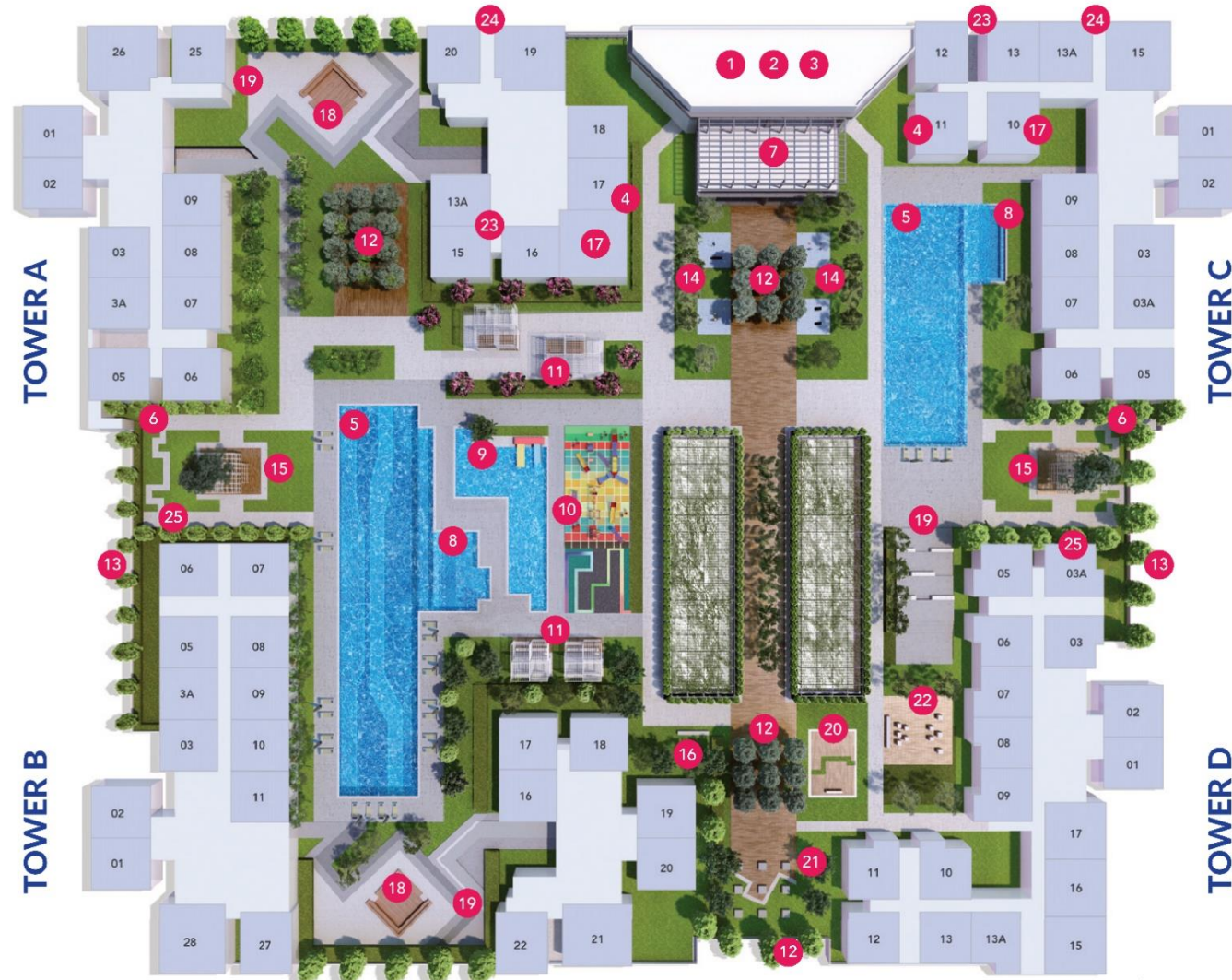


Horizon Suites is 4km away from the Salak Tinggi ERL station which is connected to the following major destinations:

- 1 station away from KL International Airport (KLIA)
- 2 stations away from Terminal Bersepadu Selatan (TBS)
- 3 stations away from KL Sentral



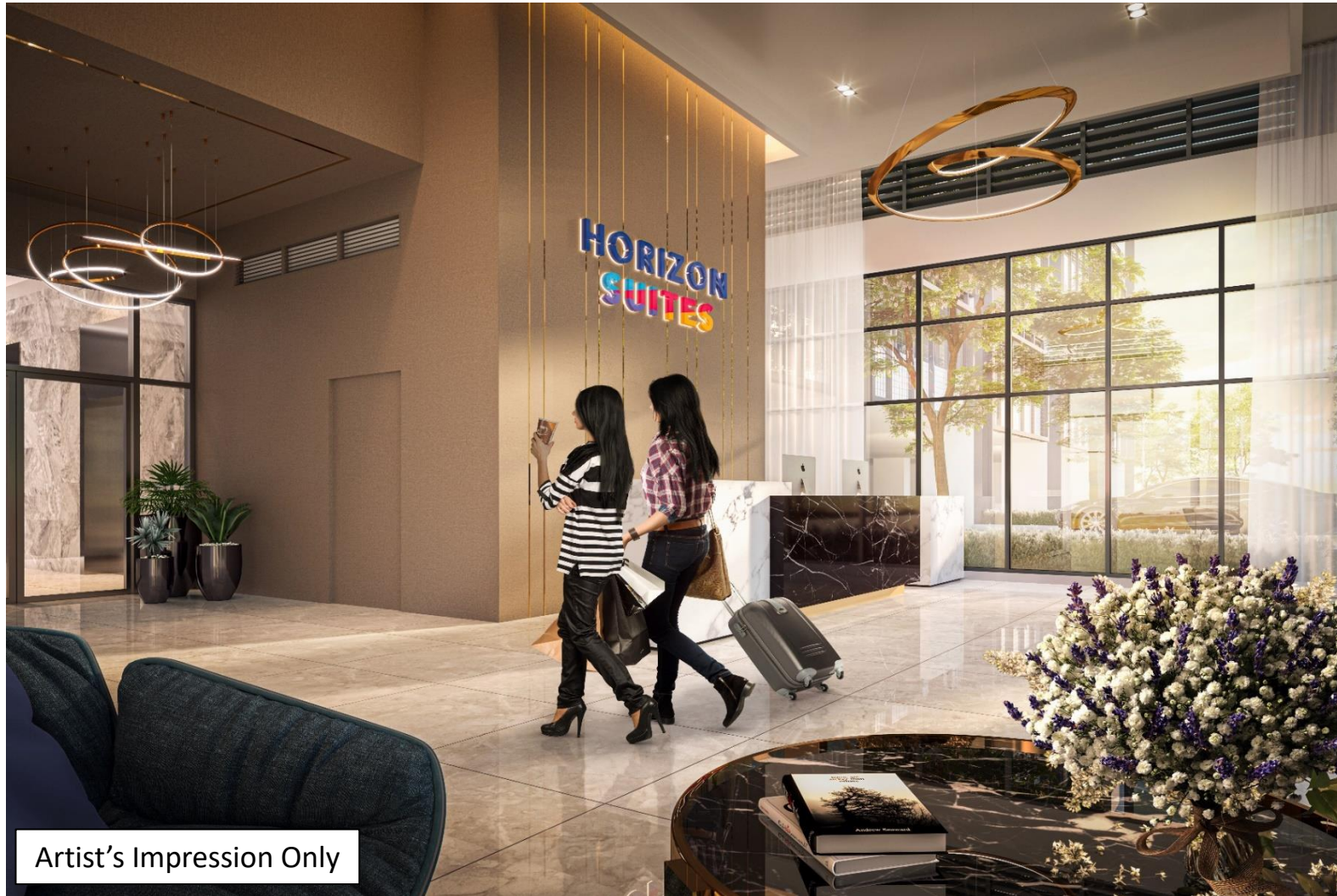
# Facilities



- 1 Fitness Gym
- 2 Badminton Court
- 3 Multipurpose Hall
- 4 Activity Rooms
- 5 Swimming Pools
- 6 Reflexology Walk
- 7 Yoga Zone
- 8 Bubbly Jacuzzi
- 9 Children's Play Pool
- 10 Playground
- 11 Paralex Pavilion
- 12 Tree Groves
- 13 Herb Garden
- 14 Outdoor Par Courses
- 15 Follies Pavilion
- 16 Calisthenic Lawn
- 17 Reading Rooms
- 18 Sunken Lounges
- 19 Picnic & Barbeque Grill
- 20 Seating Alcoves
- 21 Book Nooks / Garden
- 22 Chit-chat Corner
- 23 Male / Female Changing Room
- 24 Surau
- 25 Management Office



# Entrance Lobby



Artist's Impression Only



This presentation is the property of Horizon L&L Sdn. Bhd and is strictly confidential. It contains information intended only for the person to whom it is transmitted. With receipt of this information, recipient acknowledges and agrees that all of the information herein will be treated as confidential material with no less care than that afforded to its own confidential material. This presentation is for informational.

# Badminton Court



Artist's Impression Only



This presentation is the property of Horizon L&L Sdn. Bhd and is strictly confidential. It contains information intended only for the person to whom it is transmitted. With receipt of this information, recipient acknowledges and agrees that all of the information herein will be treated as confidential material with no less care than that afforded to its own confidential material. This presentation is for informational.



# Activity Rooms / Karaoke Room (Block C)



Artist's Impression Only



This presentation is the property of Horizon L&L Sdn. Bhd and is strictly confidential. It contains information intended only for the person to whom it is transmitted. With receipt of this information, recipient acknowledges and agrees that all of the information herein will be treated as confidential material with no less care than that afforded to its own confidential material. This presentation is for informational.



# Swimming Pools



Artist's Impression Only



This presentation is the property of Horizon L&L Sdn. Bhd and is strictly confidential. It contains information intended only for the person to whom it is transmitted. With receipt of this information, recipient acknowledges and agrees that all of the information herein will be treated as confidential material with no less care than that afforded to its own confidential material. This presentation is for informational.



# Reading Room / Coworking Space (Block A)



Artist's Impression Only



This presentation is the property of Horizon L&L Sdn. Bhd and is strictly confidential. It contains information intended only for the person to whom it is transmitted. With receipt of this information, recipient acknowledges and agrees that all of the information herein will be treated as confidential material with no less care than that afforded to its own confidential material. This presentation is for informational.



# Reading Room / Games Room (Block C)



Artist's Impression Only



This presentation is the property of Horizon L&L Sdn. Bhd and is strictly confidential. It contains information intended only for the person to whom it is transmitted. With receipt of this information, recipient acknowledges and agrees that all of the information herein will be treated as confidential material with no less care than that afforded to its own confidential material. This presentation is for informational.



# Follies Pavillion



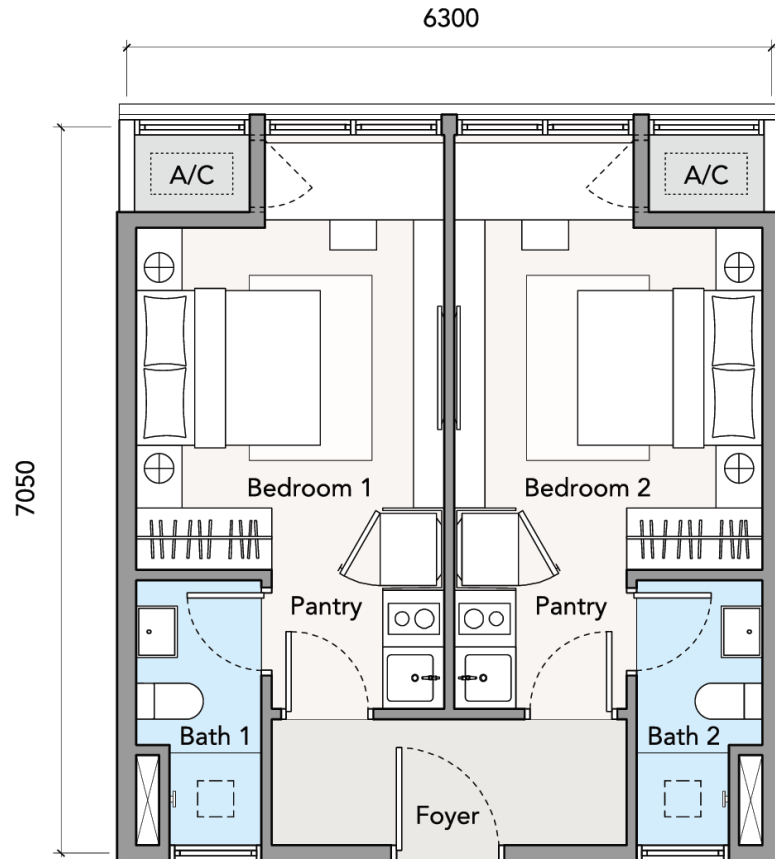
Artist's Impression Only



This presentation is the property of Horizon L&L Sdn. Bhd and is strictly confidential. It contains information intended only for the person to whom it is transmitted. With receipt of this information, recipient acknowledges and agrees that all of the information herein will be treated as confidential material with no less care than that afforded to its own confidential material. This presentation is for informational.

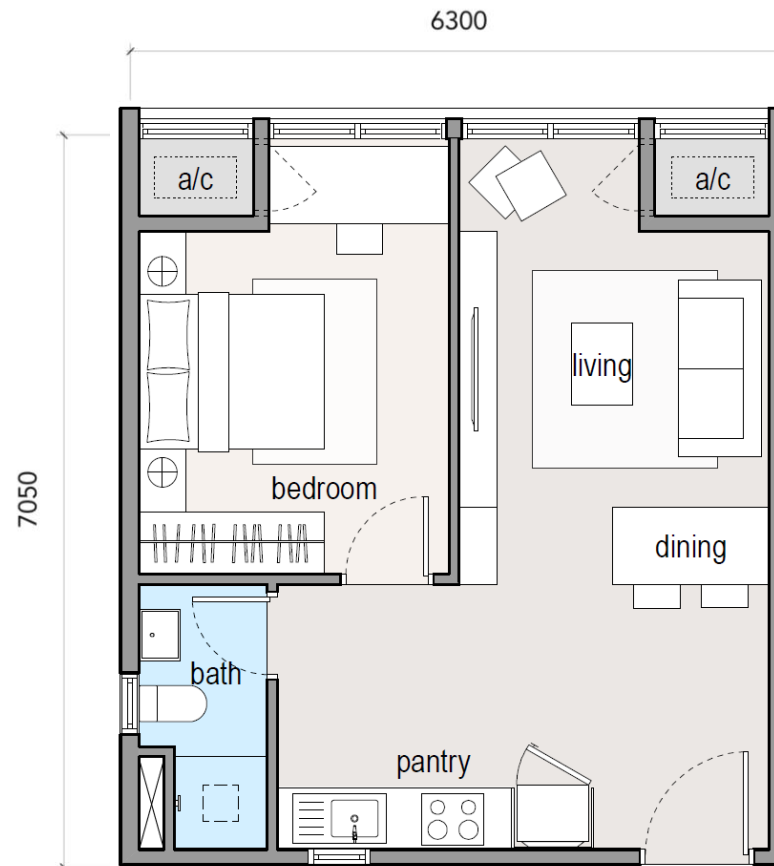


# Unit Layout



TYPE  
**1**

TWIN KEY  
478 SF

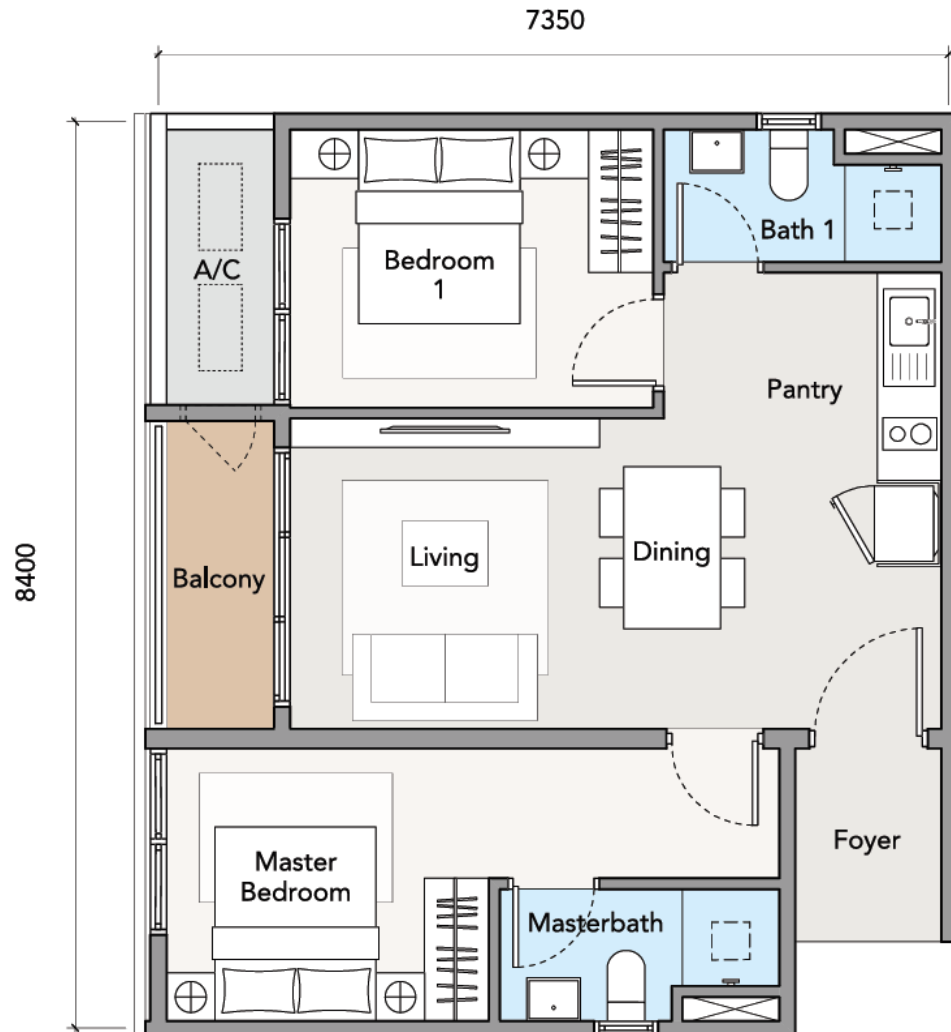


TYPE  
**2**

1 BEDROOM SUITE  
478 SF



# Unit Layout



TYPE  
**3**

2 BEDROOM SUITE  
650 SF







Artist's Impression Only





# HORIZON SUITES



Artist's Impression Only





# Horizon Suites



Artist's Impression Only



This presentation is the property of Horizon L&L Sdn. Bhd and is strictly confidential. It contains information intended only for the person to whom it is transmitted. With receipt of this information, recipient acknowledges and agrees that all of the information herein will be treated as confidential material with no less care than that afforded to its own confidential material. This presentation is for informational.