



THE ULTIMATE LIFESTYLE



In The Heart Of Kuala Lumpur

This is a mixed development consisting of residential, commercial, SOHO and serviced apartments. It also features the first SOHO Transit concept in Malaysia.

Located in the heart of Kuala Lumpur, it is situated within the mature neighbourhoods of Jalan Jelatek & Jalan Ampang. Astrum enjoys the view of the Petronas Twin Towers, which is a mere 4 km away.

Envisioned & designed with young generation's perspective & lifestyle, Astrum is an ideal development for investors and homebuyers alike.



6 Main USPs

- 1. Superb Location**
- 2. Great Accessibility**
- 3. Smart Technologies**
- 4. Premium Hotel Facilities**
- 5. New HOPSCA Concept**
- 6. Affordability**

TRANSPORTATION (LRT)

4 Stations from KLCC

Jelatek LRT Station (Kelana Jaya Line)

SHOPPING MALL

100m - Datum Jelatek Mall

1.1km - Great Eastern Mall

2.3km - Giant Supermarket Setiawangsa

3.5km - Aeon Mall Au 2

3.8km - Suria KLCC

HEALTHCARE

1.4km - Gleneagles Intan Medical Center

2.3km - HSC Medical Center

3.2km - KPJ Ampang Puteri Specialist

4.0km - Prince Court Medical Centre

6.4km - Hospital Kuala Lumpur

7.0km - KPJ Tawakkai Health Centre

EDUCATION

210m - Sri Al-Amin Private School

1.0km - SK Taman Keramat 1

2.0km - Geomatika University College

2.0km - Sayfol International School

2.2km - The International School Of KL

SPORTS & PARKS

150m - Jelatek Public City Park

170m - Datuk Keramat Sport Complex

2.4km - Royal Selangor Polo Club

2.7km - Ampang Hilir Lake Garden

3.4km - Royal Selangor Gold Club

3.5km - KL City Park

EMBASSY

1.5km - Embassy of Korean

1.9km - Embassy of China

2.1km - Embassy of Thailand

2.8km - Embassy of France

3.2km - Embassy of US





GREAT ACCESSIBILITY

SOUTH

Major Highway

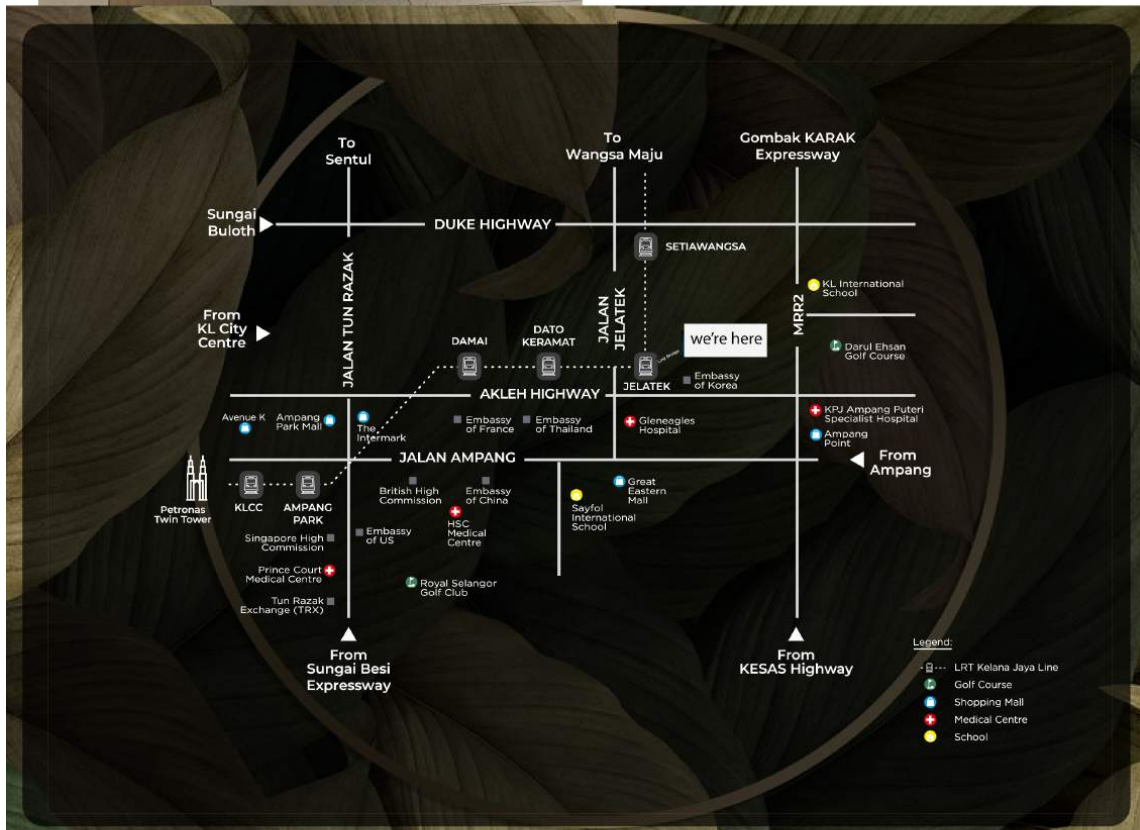
- MRR2
- AKLEH
- Jalan Ampang

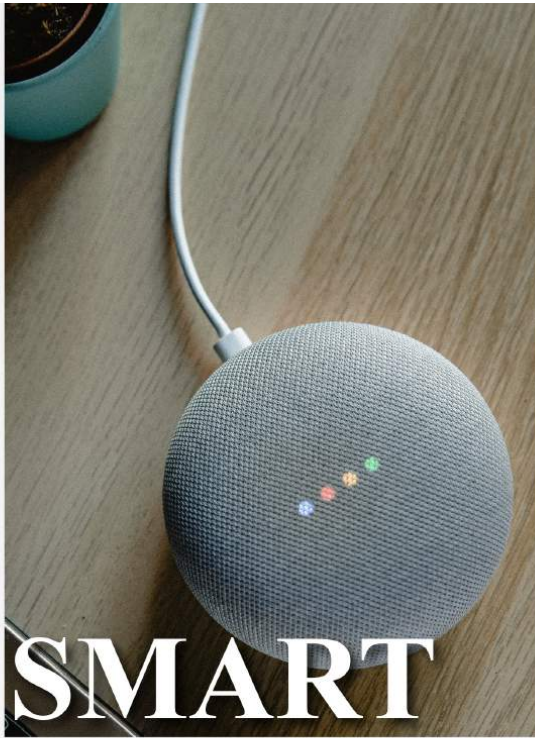
EAST

- DUKE 1
- DUKE 3

LINK BRIDGE TO LRT

4 STATION TO KLCC





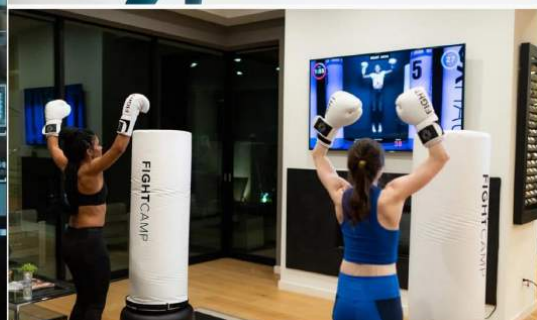
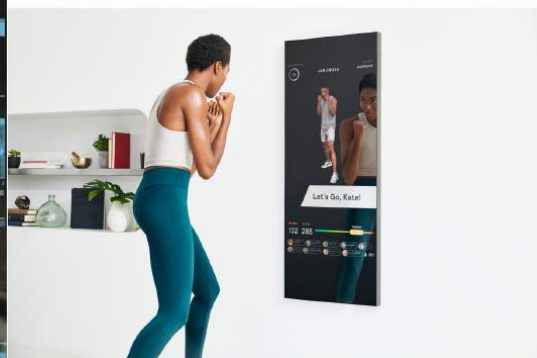
Smart
Community
App

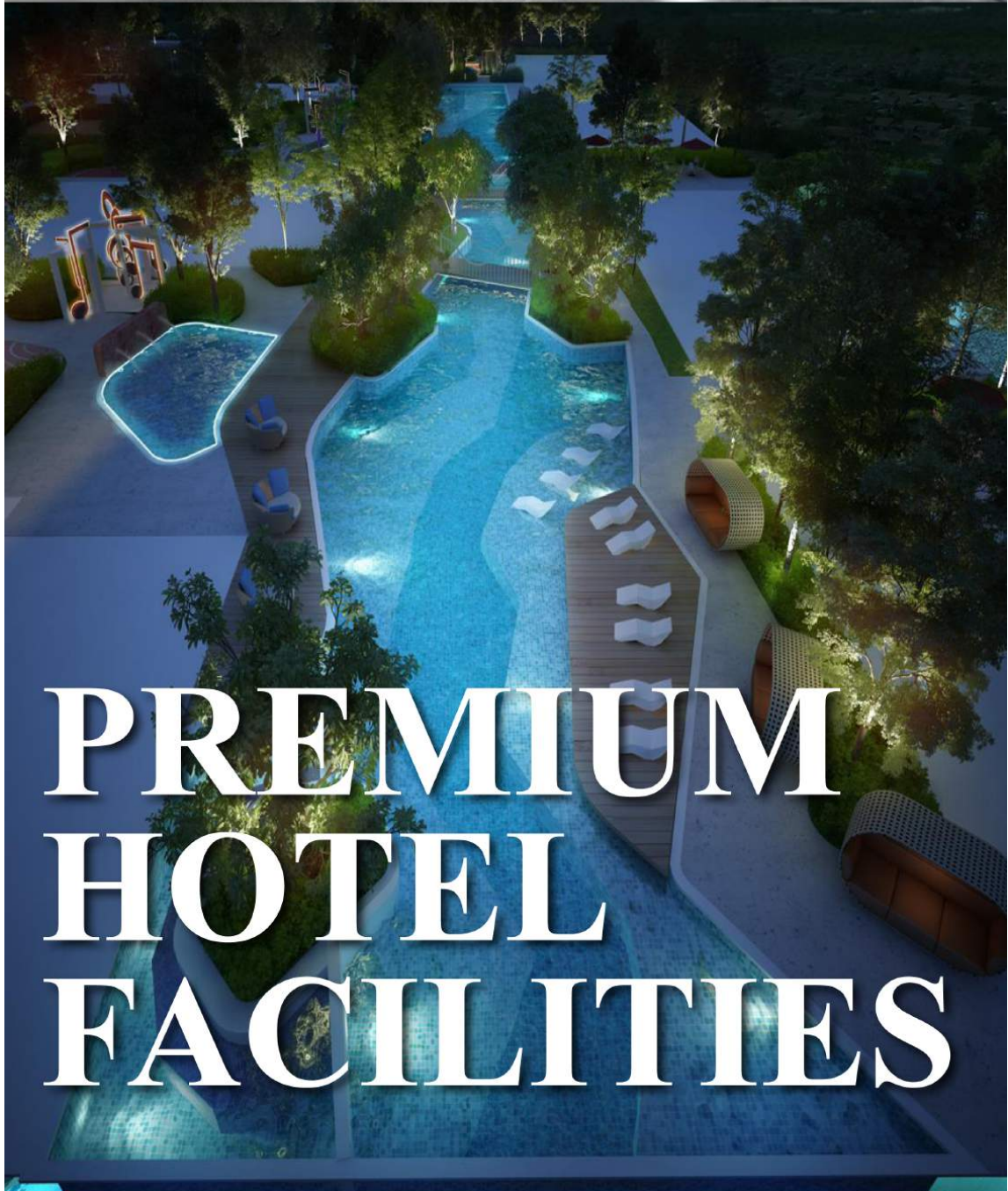
...

Smart
Gym

...

WiFi Connection
(Public Area)





PREMIUM HOTEL FACILITIES

62 FACILITIES

Live - Work - Play Lifestyle



Level 9

Reference Corner

1. Grand Lobby
2. Reading Room
3. Library
4. Co-Living Space

Daily Conveniences

5. Newstand
6. Mini Market
7. Self Service / Coin Laundry

Eat & Chill

8. Cafeteria
9. Vending Machine Corner
10. Café All-Day Dining
11. Sky Lounge Café

Nursery & Care

12. Children Nursery

Place Of Worship

13. Surau (M/F)

Indoor & Active

14. Kids' Indoor Playground
15. Gymnasium
16. Virtual Cycling / Cardio Cycling
17. Multi-Purpose Fitness Hall
18. Steam (M/F)
19. Ladies Gym
20. Yoga Studio
21. Table Tennis
22. Indoor Badminton Court
23. Dance Studio

Business & Events

24. Management Office
25. Multi-Purpose Hall
26. Meeting Room
27. Gallery Space
28. Co-Working Space
29. Function Room / Culinary
30. Business Discussion Room
31. Gourmet Kitchen
32. Work Studio

Entertainment

33. Gaming Room
34. Private Party Room
35. Mini Theatre / Auditorium
36. Outdoor Theatre
37. Mahjong Room

Storage & Delivery

38. Rentable Storage Space
39. Centralized Delivery Centre
40. Drone Delivery Landing

Relax & Rejuvenate

41. Antioxidant Room
42. Aerobic Deck
43. Meditation Room
44. Spa & Onsen Space
45. Reflexology Space

Landscaped Gardens

46. Signature Lantern Pavilion
47. Herbs Garden
48. Koi Pond / Reflection Pond
49. Fragrance Garden

Outdoor & Recreational

50. Pool Side Seating Area
51. Outdoor Playground
52. BBQ Pavilion
53. Outdoor Tennis Court
54. Jogging Track
55. Milky Way Pool
56. Kids' Pool / Wading Pool
57. Outdoor Fitness
58. Futsal Court / Basketball Court
59. Golf Putting
60. Glittery Jacuzzi
61. Supernova Key Pool
62. Kids Water Playground





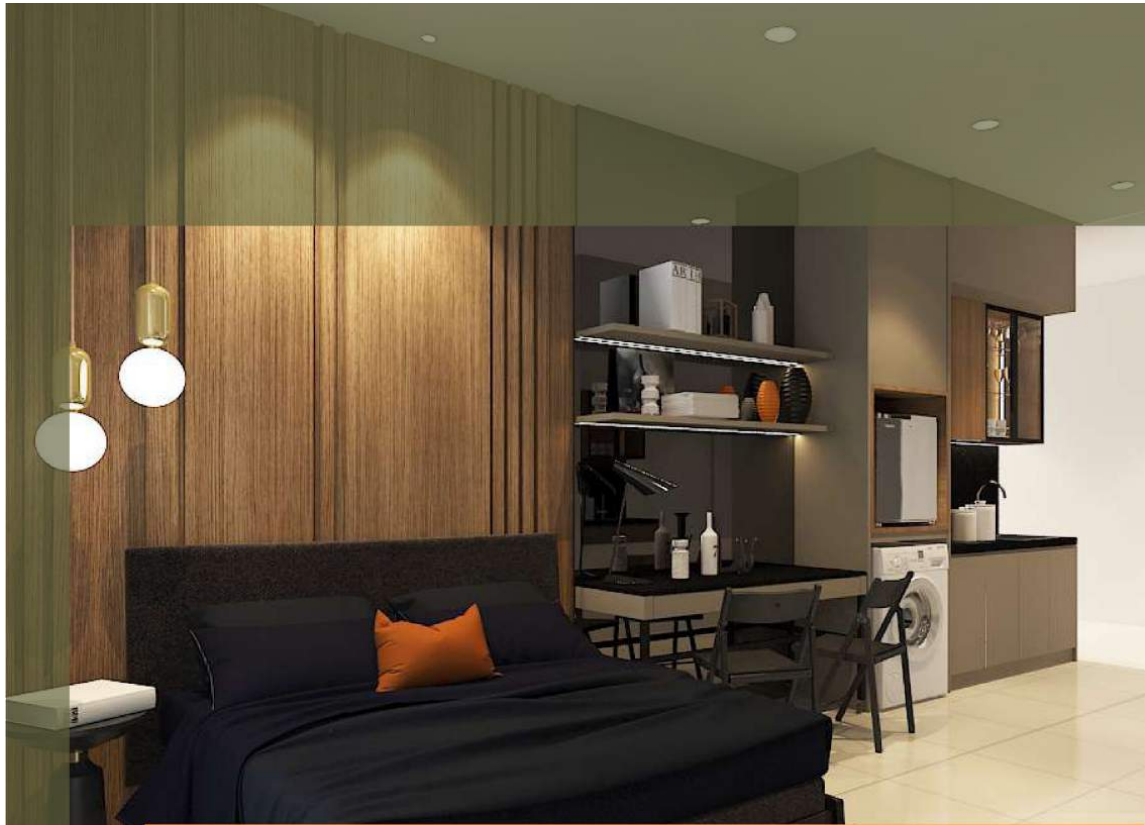
H = Hotel
O = Office
P = Park
S = Shopping
C = Connectivity
A = Apartment

New HOPSCA Concept

A CITY IN A CITY

HOPSCA has characteristics of a complete neighbourhood, bringing added value and urban functions that allow for the development to organically integrate with the external city through an efficient transportation system in place, thus bringing convenience to overall aspects of life.





Affordability





WE HOPE TO HEAR
FROM YOU SOON